



1.5mm To 20mm Rectangular Steel Pipe Thick Wall Stainless Steel ASTM

Our Product Introduction

for more products please visit us on pipesteels.com

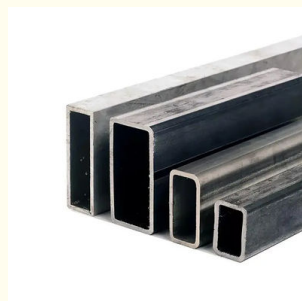
Basic Information

- Place of Origin: China
- Brand Name: Zhengshen
- Certification: ISO, GOST, CE
- Model Number: 1.5-20mm thickness
- Minimum Order Quantity: 1 Ton
- Price: USD400-700/Ton
- Packaging Details: Bundle
- Delivery Time: 5-15 days
- Payment Terms: T/T, LC



Product Specification

- Name: Rectangular Steel Pipe
- Material: Carbon Steel; Stainless Steel
- Color: Black; Galvanized
- Shape: Square
- Surface: Other
- Oiled Or Non-oiled: Non Oiled
- Tolerance: $\pm 10\%$
- Oiled Or Non-oiled: Non-oiled
- Highlight: 1.5mm Rectangular Steel Pipe,
20mm Rectangular Steel Pipe,
Thick Wall rectangular stainless steel pipe



More Images



Product Description

1.5mm To 20mm Thick Wall Precision Steel Pipe ASTM Rectangular Stainless Steel Pipe

Feature:

Application: Structure Pipe
Alloy Or Not: Non-Alloy
Section Shape: Square
Special Pipe: Thick Wall Pipe
Thickness: 1.5 - 20 mm
Standard: ASTM, BS EN10219
Technique: ERW
Grade: carbon steel, A106(B, C)
Surface Treatment: Natural black
Tolerance: $\pm 10\%$
Processing Service: Welding, Punching, Cutting
Oiled or Non-oiled: Slightly Oiled
Delivery Time: 15-21 days
Length: 1-6m or as your requirement

The rectangular tube is a kind of hollow long steel, also known as the flat tube, flat square tube, or square flat tube. When the bending resistance and torsional strength are the same, the weight is lighter, so it is widely used in the manufacture of mechanical parts and engineering structures. The rectangular tube is a kind of hollow square section light thin-walled steel tube, also known as steel cold bending section. It is made of the Q235 hot-rolled or cold-rolled strip or coil as the base material, which is formed by cold bending and then high-frequency welding. In addition to the thickening of the wall thickness

Our Product Introduction

for more products please visit us on pipesteels.com

of the hot-rolled extra-thick-walled square tube, its corner size and edge straightness have reached or even exceeded the level of the resistance-welded cold-formed square tube.



Chongqing Zhengshen Stainless Steel Products Co.,Ltd.



+86 189 9647 2857



cqzhengshen@hotmail.com



pipesteels.com

Chenjiawan Industrial Park, Jieshi Town, Banan District, Chongqing, China