

CGCC CGCH Color Coated Steel Plate DX51D Pre Painted Galvalume Steel 600 - 1500mm

Our Product Introduction

Basic Information

- Place of Origin: China
- Brand Name: Zhengshen
- Certification: ISO, GOST, CE
- Minimum Order Quantity: 1 T
- Price: Negotiable
- Delivery Time: 5-15 days
- Payment Terms: T/T, LC

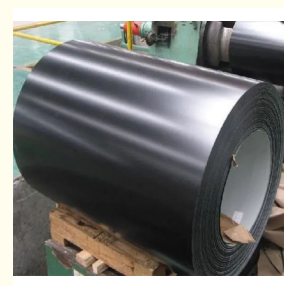
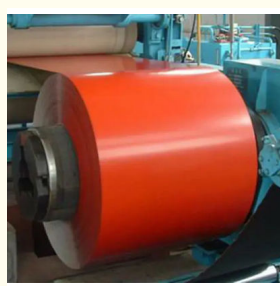
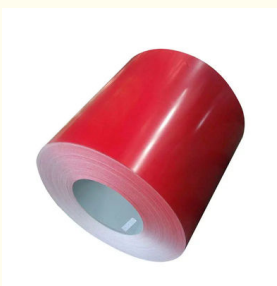


Product Specification

- Highlight: CGCC CGCH Color Coated Steel Plate, Color Coated Steel Plate 600mm, pre painted galvalume steel 1500mm



More Images



for more products please visit us on pipesteels.com

Product Description

CGCC,CGCH,G550,DX51D,DX52D,DX53D Prepainted Galvalume Steel Coils

Feature:

Grade: CGCC,CGCH,G550,DX51D,DX52D,DX53D
 Thickness: 0.12-4.0mm
 Width: 600-1500mm
 Zinc Coating: Z40-600 g/m2
 Coating Thickness: Top 15-35, Back 5-35
 Color: RAL Color
 Surface: Matt,High gloss,Color with two sides,Wrinkle, Wooden color,Marble
 Paint Brand: Nippon Akzo Nobel Kcc
 Coil Weight: 2-5tons
 Coil ID: 508/610 mm

Specification:

Place of Origin:	Shandong, China	Brand Name:	ZHENG SHEN
Application:	cutting sheets, making corrugated sheets	Type:	Steel Coil
Thickness:	0.12-0.2	Standard:	JIS
Width:	700-900MM	Length:	ANY LENGTH
Certificate:	ISO9001	Grade:	CGCC
Coating:	Z30-Z40	Tolerance:	±1%
Processing Service:	Cutting	RAL Color:	ANY COLOR
Hardness:	Full Hard	Delivery Time:	15-21 days
Product Name:	PE Paint Galvanized Steel Prepainted Color Coated PPGI Steel Coil	Surface:	PE Coated
Color:	RAL Color	Coil Weight:	3-5 Tons
Coil ID:	508/610mm	Zinc Coating:	30-275g/m2
Primer coating:	8-35/5-35um	Painted Brand:	Akzo paint,Nippon, KCC,etc
Material:	CGCC, DX51D, DX52D, DX53D	Technique:	Cold Rolled



Chongqing Zhengshen Stainless Steel Products Co.,Ltd.



+86 189 9647 2857



cqzhengshen@hotmail.com



pipesteels.com

Chenjiawan Industrial Park, Jieshi Town, Banan District, Chongqing, China