



7000 Series Aluminium Alloy Plate Polished Aluminum Plate 2 - 2200Mm

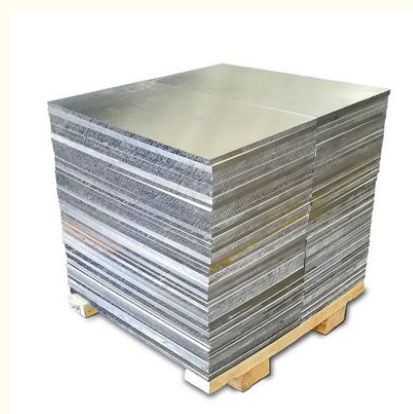
Basic Information

- Place of Origin: China
- Brand Name: Zhengshen
- Certification: ISO, GOST, CE
- Minimum Order Quantity: 1 T
- Price: Negotiable
- Delivery Time: 5-15 days
- Payment Terms: T/T, LC

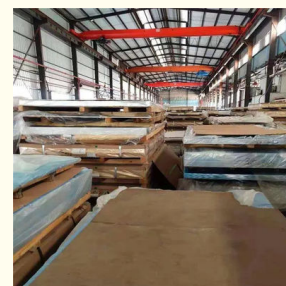
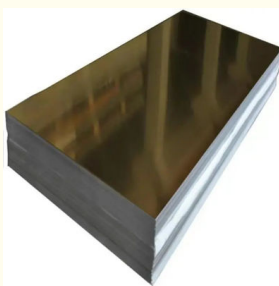


Product Specification

- Highlight: 7000 Series Aluminium Alloy Plate 2MM, Aluminium Alloy Plate 2200Mm, polished aluminum plate DIN



More Images



Product Description

7000 Series Polished Aluminum Sheet Plate Aluminum Alloy Sheet

Feature:

Grade: 7000 Series
 Temper: O-H112
 Type: circle
 Application: utensils, Industry
 Width: 2-2200 mm, 2-2200 mm
 Surface Treatment: Coated
 Alloy Or Not: Non-Alloy
 Tolerance: $\pm 1\%$
 Processing Service: Bending, Decoiling, Welding, Punching, Cutting
 Delivery Time: 8-14 days,
 Product name: Aluminum Alloy Plate
 Shape: Flat Plate
 Color: Silvery
 Material: 1000/3000/5000/6000/7000
 Surface: Coating
 Standard: ASTM AISI JIS DIN GB
 Ultimate strength: 60-155 MPa

Specification:

Alloy	Application field
1x xx	1050 Insulation, food industry, decoration, lamp, traffic signs etc.
	1060 Fan blade, Lamps and lanterns, Capacitor shell, Auto parts, Welding parts
	1070 Capacitor, Rear panel of vehicle refrigerator, charging point, heat sink etc
	1100 Cooker, building material, printing, heat exchanger, bottle cap etc
2x xx	2A12 2024 Aircraft structures, rivets, aviation, machinery, missile components, the card wheel hub, propeller components, aerospace parts, car parts and various other structural parts.
3x xx	3003 Aluminum curtain wall panel, aluminum Ceiling, Electric cooker bottom, TV LCD backboard, storage tank, curtain wall, building construction panel heat sink, billboard. Industrial floor, air conditioning, refrigerators radiators, Make-up board, Prefabricated house etc
	3004
	3005
	3105
5x xx	5052 Marine and transportation material, railway carriage's inner and outer cabinet, oil and chemical industry storage device, equipment and medical device panel etc.
	5005 Marine applications, bodies of boats, buses, trucks and trailer. Curtain wall panel.
	5086 Ship board, deck, bottom and edge panel etc.
	5083 Tanker, oil storage tank, drilling platform, ship board, deck, bottom, welded parts and edge panel, railway carriage 's board, automotive and aircraft panel, cooling device and automotive molding etc.
	5182
	5454
6x xx	5754 Tanker body, marine facilities, pressure container, transportation etc.
	6061 Railway inside and outside parts, board and bed plate. Industry molding Highly stressed applications includes Roofing construction, transportation, and marine as well as mould.
	6083
	6082
7x xx	6063 Auto parts, architectural fabrication, window and door frames, aluminum furniture, electronic components as well as various consumer durable products.
	7005 Truss, rod/bar and the container in transportation vehicles; Large-sized heat ex changers
	7050 Molding (bottles) mode, ultrasonic plastic welding mold, golf head, shoe mold, paper and plastic molding, foam molding, lost wax mold, templates, fixtures, machinery and equipment
	7075 Aerospace industry, military industry, electronic etc

□

Grade:	3000 Series	Temper:	T3-T8
Processing Service:	Bending, Decoiling, Welding, Punching, Cutting	Delivery Time:	22-30 days
Brand Name:	Zhengshen	Tolerance:	$\pm 3\%$
Type:	Plate	Application:	Decoration, industry, container making

Product name:	aluminium plate / sheet	Thickness:	0.3-4.0mm
Width:	1000-1500mm	Surface Treatment:	Coated
Technique:	Cold Rolled	Edge:	Slit Edge
Alloy Or Not:	Is Alloy	Place of Origin:	Shandong, China
Sheet Grade:	1000/ 3000/ 5000/ 6000/ 7000 series		



Chongqing Zhengshen Stainless Steel Products Co.,Ltd.



+86 189 9647 2857



cqzhengshen@hotmail.com



pipesteels.com

Chenjiawan Industrial Park, Jieshi Town, Banan District, Chongqing, China