



1m 2m 6m Copper Plate Metal Polished 99.95% Brass Mirror Polished Copper Sheet

Our Product Introduction

for more products please visit us on pipesteels.com

Basic Information

- Place of Origin: China
- Brand Name: Zhengshen
- Certification: ISO, GOST, CE
- Minimum Order Quantity: 1 T
- Price: Negotiable
- Delivery Time: 5-15 days
- Payment Terms: T/T, LC

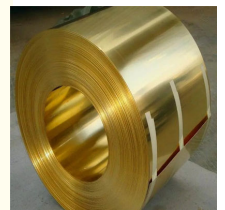
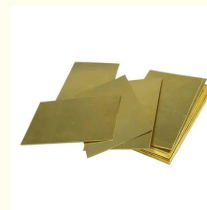
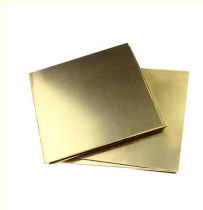
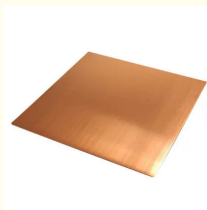
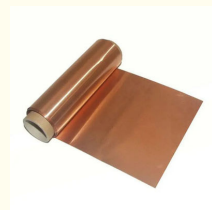


Product Specification

- Highlight: 6m copper plate metal, copper plate metal 99.95%, mirror polished copper sheet



More Images



Product Description

Length 1m,2m,6m Polished 99.95% Copper Plate Brass Sheet

Feature:

Brass plate is a widely used lead brass with good mechanical properties and good machinability. It can withstand hot and cold pressure processing. It is used for various structural parts in cutting and stamping processing.

Material: Brass

Length: 1m,2m,6m, or as required

Width: 10mm~2500mm

Cu (Min): 99.95%

Delivery time: 7-14days

Payment: T/T

Specification:

Place of Origin:	Shandong, China	Brand Name:	Zhengshen
Elongation (≥ %):	35%	Processing Service:	Bending, Welding, Decoiling, Cutting, Punching
Cu (Min):	99%	Alloy Or Not:	Non-Alloy
Application:	Industry, construction, decorative, etc.	Shape:	Plate

for more products please visit us on pipesteels.com

Product name:	copper sheet plate	Surface:	Polished
Ultimate Strength (≥ MPa):	220--400	Keyword:	copper plate
Width:	20~2500mm or Customized	Material:	Brass
Hardness:	1/2H	Thickness:	0.1mm~200mm or Customized
Grade:	pure copper		

□



Chongqing Zhengshen Stainless Steel Products Co.,Ltd.



+86 189 9647 2857



cqzhengshen@hotmail.com



pipesteels.com

Chenjiawan Industrial Park, Jieshi Town, Banan District, Chongqing, China